

# **Export** capability statement

---

**Proudly supplying steel  
and aluminium products,  
processing and solutions  
to Australasia and beyond**

**Steel. Aluminium.**  
**Knowhow.**

# Our commitment to project success

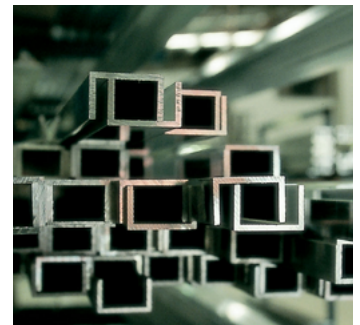
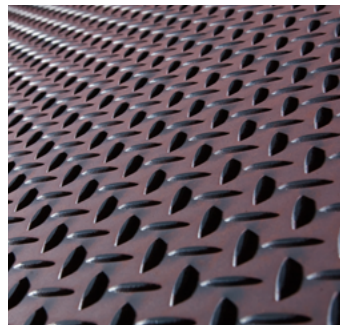


We are BlueScope Distribution, a market leading steel and aluminium distributor and solutions provider. We are part of the broader BlueScope group of businesses servicing a wide range of industries in Australia.

**Our export business** is dedicated to servicing our overseas customers. Strategically based in Brisbane, Australia, BlueScope Distribution's export team is in close proximity to the Port of Brisbane, Brisbane International Airport and the logistic hub for the transportation of goods across Australia and overseas via ship, air, road and rail.

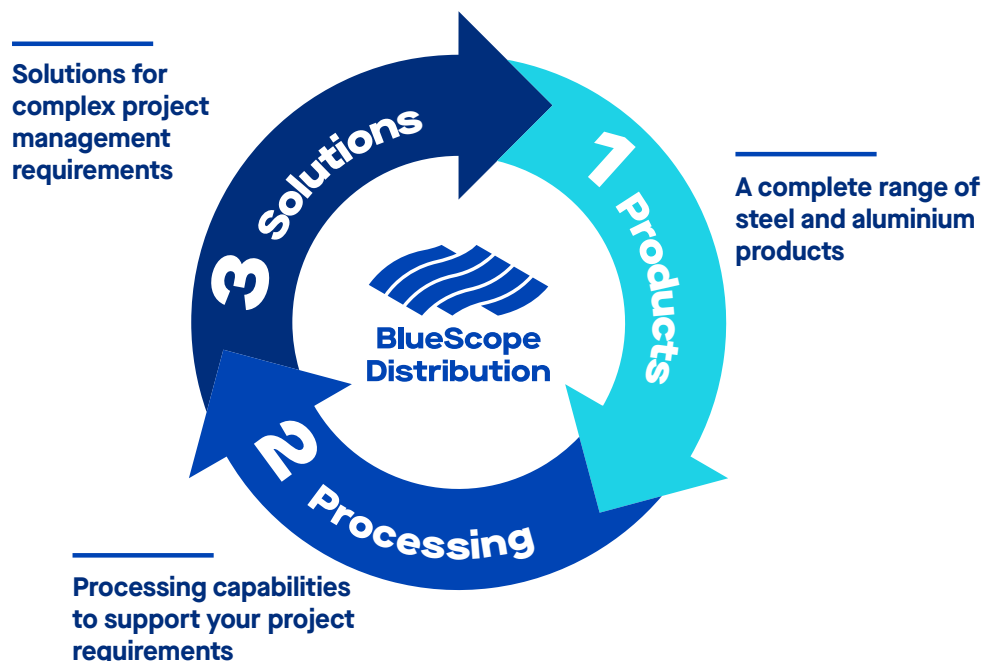
Our export services support customers in New Caledonia, New Zealand, Vanuatu, Fiji, Solomon Islands, Papua New Guinea, Indonesia, Nauru, The Philippines, Vietnam, Malaysia, South Korea, Thailand, Western Europe, Canada, South Africa (via our BlueScope International markets team office), Sri Lanka, Singapore, India, Timor-Leste and China.

With over 30 years of industry experience in the supply of steel and aluminium products for export purposes, our people understand the unique demands of exporting to international markets. Starting with specialised exporting packing procedures, we can coordinate the entire supply chain solution, to port of delivery.



## Providing end to end solutions to our overseas customers

Experience the ease of doing business with our export business - delivering:



# Your single source product, processing and service solutions provider

## 01 Steel. Aluminium.

### Products

Our export business has access to a full suite of steel and aluminium products\* as well as the ability to produce specially designed steel grades outside of the standard product range, through the BlueScope mill.

Backed by our commitment to quality, we help reduce compliance risk through our ISO 9001 quality management system accreditation with documented systems and processes. We provide full material traceability and compliance via manufacturing mill material test certificates and letters of compliance.

Some of our key products include:

Colorbond®

Truecore®

Zincalume®

Galvabond®

TruSpec®

Zincform®

Xtrelplate®

Bisalloy

## 02 Steel. Aluminium.

### Processing

We are committed to providing high quality processing capabilities, ranging from steel plasma cutting, bevelling, shearing, slitting and re-coiling to complex and precise aluminium router cutting.

Our key processing services include:



Steel sawing,  
cropping, coping  
and notching



Steel roll  
and cut grooving



Steel  
bending-to-shape



Steel and aluminium  
laser cutting



Steel plate plasma  
cutting, drilling,  
etching & bevelling



Steel sheet  
shearing & coil  
slitting



Aluminium routing,  
sheet shearing &  
coil slitting



Aluminium PE film  
application for  
surface protection

## 03 Steel. Aluminium.

### Solutions

Highly recognised for our exceptional customer service, we provide our overseas customers with end-to-end steel and aluminium project management solutions, delivering personalised supply chain co-ordination. Our teams have the experience to meet project milestones by coordinating material from multiple suppliers, managing production schedules, transport and delivery to provide one seamless point of contact.

Our ability to label and kit material helps some overseas customers to find significant efficiencies in their production, and our team have the resources to tackle the most complex requirements with our Steel Efficiency Review® designed to improve our customers' experience.

Our core service solutions comprise:



B2B Digital system  
integration for ease of  
doing business



Centralised  
supply chain



Kitting, product  
labelling and  
identification

STEEL EFFICIENCY  
REVIEW®

Steel Efficiency Review®  
improving our customers'  
experience



# Our export value proposition



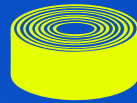
## Efficiency

Experience the ease of dealing with a single-source steel and aluminium product supplier, processor and service solutions provider.



## Understanding

Our skilled export team with depth of industry expertise, technical know-how, and product knowledge strive to provide a unique level of customer understanding.



## Strength

The strength of our steel and aluminium products to deliver industry confidence to our overseas customers and the projects they undertake.



## Certainty

Through our centralised supply chain, our export teams provides certainty to our overseas customers by co-ordinating material from multiple suppliers.



Click to access our other resources



**BlueScope  
Distribution**

**For more information**

**export@bluescopesteel.com  
bluescopedistribution.com.au**

\*Not all products and brands are available in all regions. Please consult the BlueScope Distribution export team directly regarding your specific requirements and product availability to your region.

The information in this brochure is provided by the way of general information only and should not be relied upon by any person. You must seek specific advice as to the suitability of the products featured in this brochure for the purpose for which, and the manner in which, you propose to use them. This may involve further independent analysis and testing. BlueScope Steel Limited, and its related bodies corporate take no responsibility for any adverse consequences of any nature which arise as a result of reliance on this brochure. Information on safe storage and safety datasheets for BlueScope's products can be found at [www.bluescopesteel.com.au](http://www.bluescopesteel.com.au)/SDS-Storage. BlueScope Distribution, COLORBOND, TRUECORE, ZINCALUME, GALVABOND, ZINCFORM, TRU-SPEC and XLERPLATE are registered trademarks of BlueScope Steel Limited. BISALLOY is a registered trademark of Bisalloy Steels. © 2021 BlueScope Steel Limited ABN 16 000 011 058.